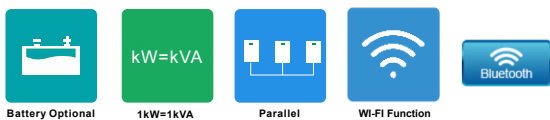


ISolar SMR II Series

Off Grid Energy Storage Inverter

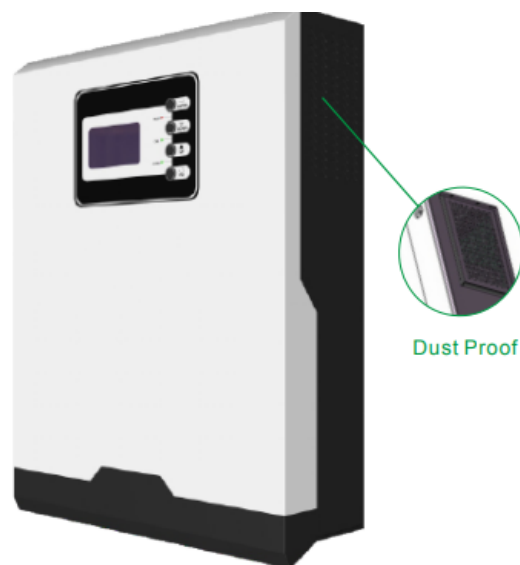


Product Snapshot

Model: 3-5.5kW

Nominal Voltage: 230VAC

Frequency Range: 50Hz/60Hz



Anti-Dust Kit:

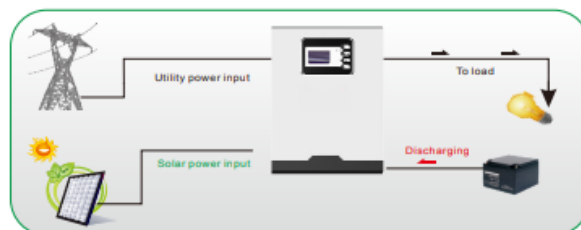
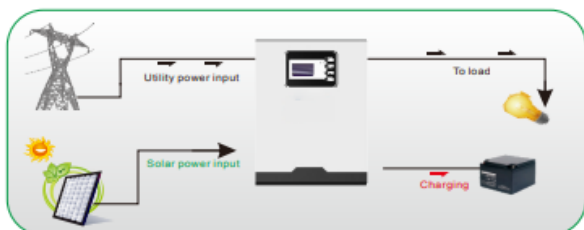
After installing this anti-dust kit, inverter will automatically detect this kit and activate internal thermal sensor to adjust internal temperature. By virtue of the dustproof design, it dramatically increases product reliability in harsh environment.

Key Features:

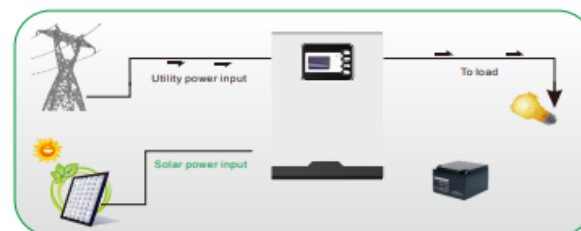
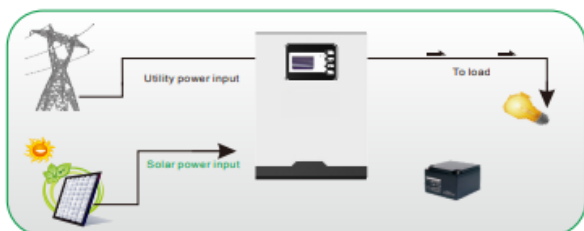
- Pure sine wave solar inverter
- Output power factor 1
- Parallel operation up to 9 units
- High PV input voltage range
- Battery independent design
- Built-in 100A MPPT solar charger
- Battery equalization function to optimize battery performance and extend lifecycle
- Built-in anti-dusk kit for harsh environment

Hybrid Operation

With battery connected



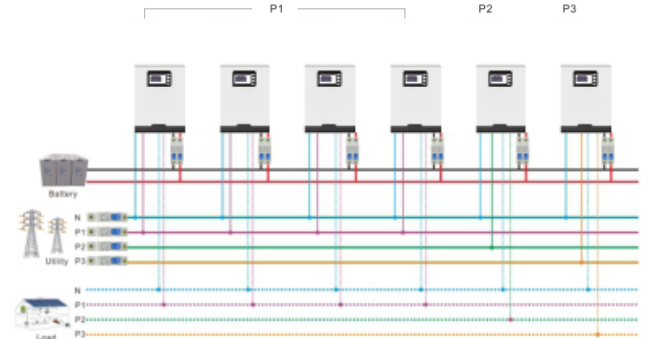
Without battery connected



■ Single phase output up to 49.5KW using 9 units



■ Three phase output using either 3 units(16.5KW)or max 9 units(49.5KW)



ISolar SMR II Series

Wall Mounted Integrated Solar Inverter Technical Specification
Built-in MPPT Solar Controller

MODEL	ISolar SMR II 3KW	ISolar SMR II 5.5KW
Rated Power	3000VA / 3000W	5500VA / 5500W
INPUT		
Voltage	230 VAC	
Selectable Voltage Range	170-280 VAC (For Personal Computers) ; 90-280 VAC (For Home Appliances)	
Frequency Range	50 Hz/60 Hz (Auto sensing)	
OUTPUT		
AC Voltage Regulation (Batt. Mode)	230VAC ± 5%	
Surge Power	6000VA	11000VA
Efficiency (Peak)	up to 93.5%	
Transfer Time	10 ms (For Personal Computers) ; 20 ms (For Home Appliances)	
Waveform	Pure sine wave	
BATTERY		
Battery Voltage	24 VDC	48 VDC
Floating Charge Voltage	27 VDC	54 VDC
Overcharge Protection	33 VDC	63 VDC
SOLAR CHARGER & AC CHARGER		
Maximum PV Array Open Circuit Voltage	500 VDC	500 VDC
Maximum PV Array Power	5500 W	5500 W
MPPT Range @ Operating Voltage	120~450 VDC	120~450 VDC
Maximum Solar Charge Current	100 A	100 A
Maximum AC Charge Current	80 A	80 A
Maximum Charge Current	100 A	100 A
PHYSICAL		
Dimension, D x W x H (mm)	100 x 300 x 440	
Net Weight (kgs)	9	10
Communication Interface	USB/RS232	
ENVIRONMENT		
Humidity	5% to 95% Relative Humidity (Non-condensing)	
Operating Temperature	- 10°C to 50°C	
Storage Temperature	- 15°C to 60°C	

Note: Product specifications are subject to change without further notice.
SSI20-0000007-30